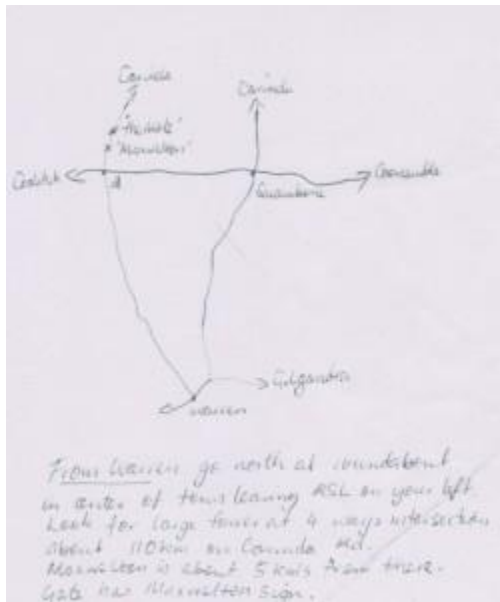


## Easter and Anzac Camps

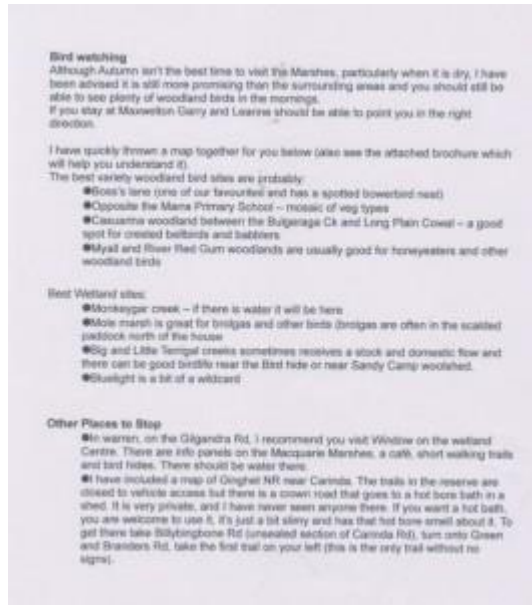
The Easter camp to Macquarie Marshes will be from Friday 19<sup>th</sup> April until Monday 22<sup>nd</sup> April, although some people probably will arrive on Thursday 18<sup>th</sup> April.

We will be staying at Maxwelton, a private property near Carinda. It is approximately 575 km (6.5 hours) from Newcastle on the fastest route. This is along the Golden Highway then Castlereagh and Oxley Highways to Warren (467 km). Then turn north along the Carinda road for about 110 km. Cross the Gibson Way and then Maxwelton is on the right about 5 km further on. Here is a map:



There are two options for staying at Maxwelton. Most people will camp. The fees for camping are \$15 per person per night payable in cash at the camp to Lorna Mee. For that price, you have access to all of the property plus two toilets, a shower and a basic kitchen area. There is limited water and it would be best if you bring your own water. Option two is a cottage which sleeps six people and has the normal facilities of a cottage in the Australian outback. The cost to stay at the cottage is \$30 per person per night payable in cash at the camp to Lorna Mee. To book into the cottage, contact Lorna Mee by email at [lornamee33@gmail.com](mailto:lornamee33@gmail.com). Please note that you will be sharing with others (unless you want to pay \$180 per night and book the cottage entirely for your group).

The owners of Maxwelton have also supplied some information about birdwatching possibilities. Here it is below as a scanned file (please note that no one from HBOC has verified these suggestions):



## Bowra Wildlife Sanctuary

There will then be the opportunity to drive on to Bowra Wildlife Sanctuary from Tuesday 23<sup>rd</sup> April until Sunday 28<sup>th</sup> April.

There is only space for 15 people to camp in an unpowered area and final numbers will need to be given to them by 9<sup>th</sup> March. To make a reservation (if you have not already done so) please contact Lorna Mee – 4987 2913 or [lornamee33@gmail.com](mailto:lornamee33@gmail.com).

The cost is \$12/person/day in cash at Bowra.

You must read the following before you arrive.

<http://www.australianwildlife.org/media/275890/bowra-conditions-of-entry.pdf>